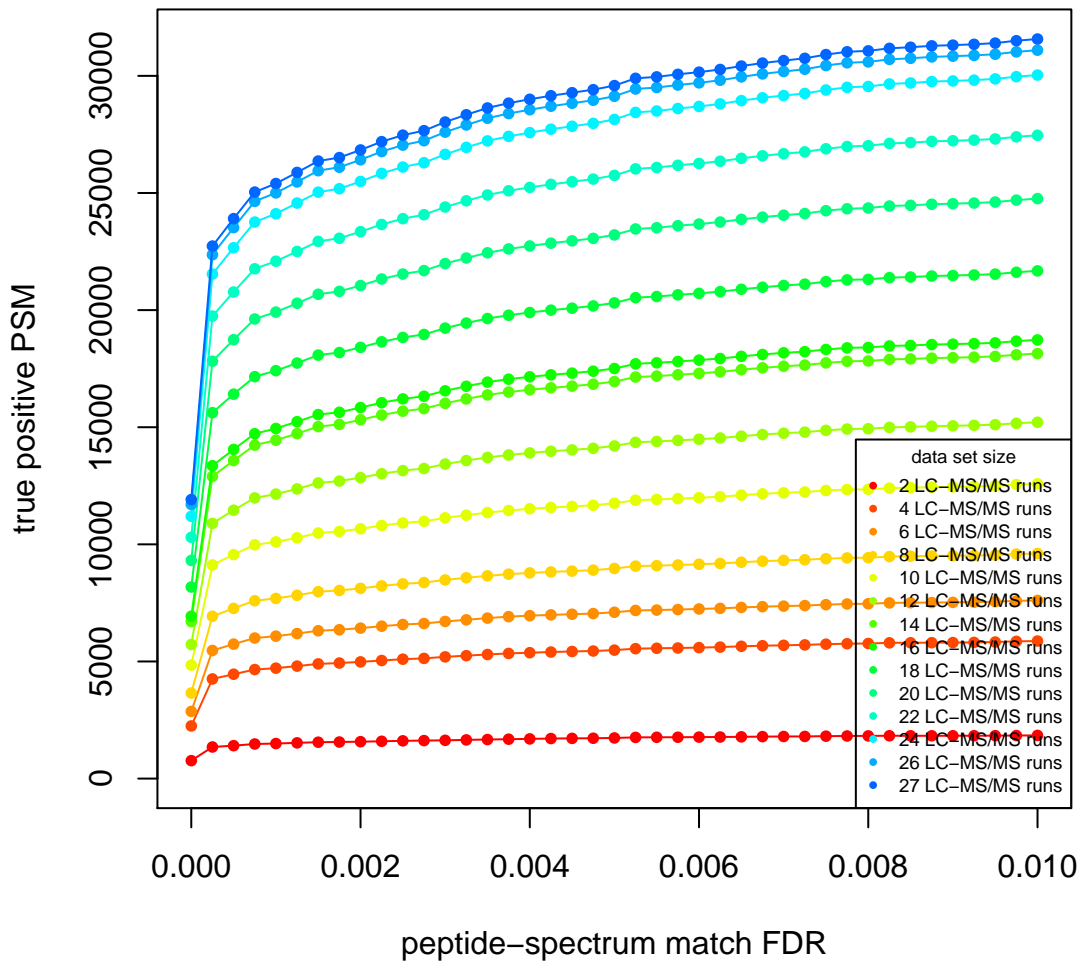
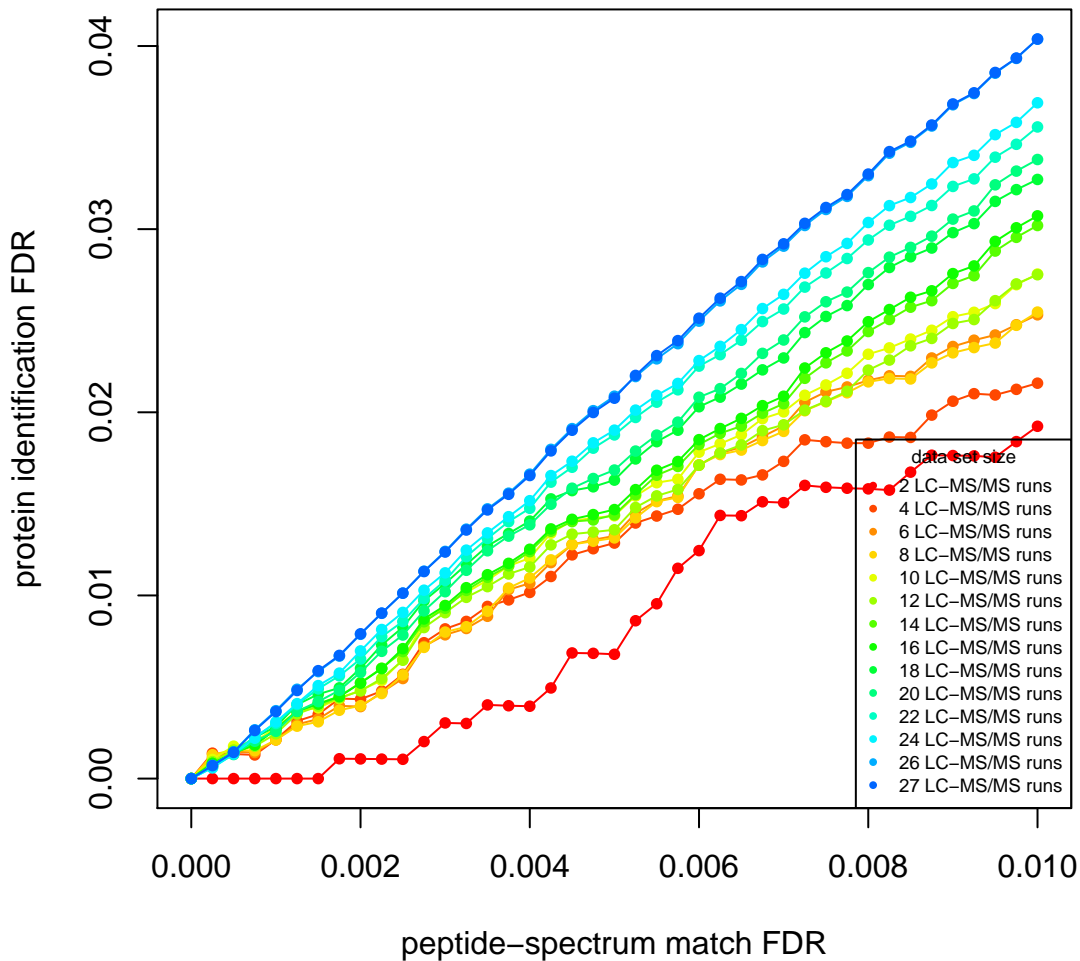


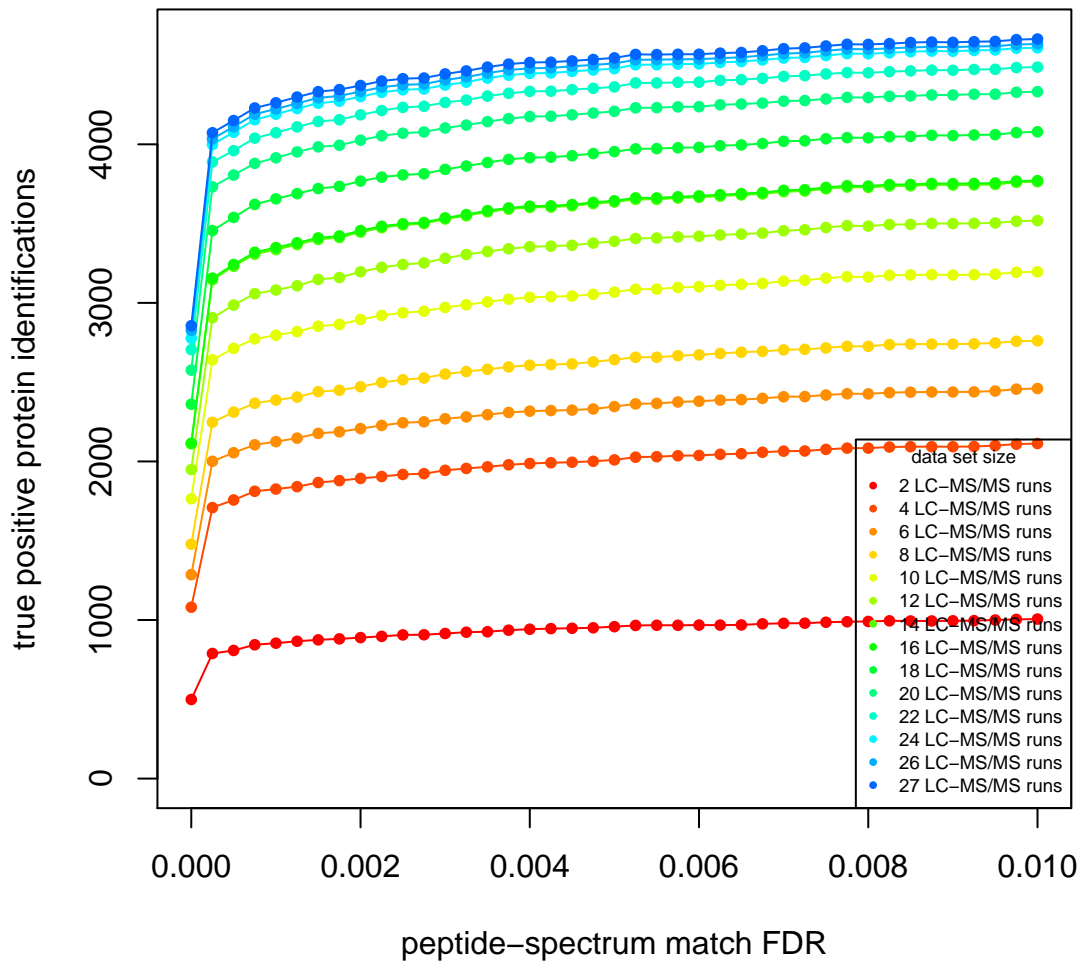
Peptide-Spectrum Matches



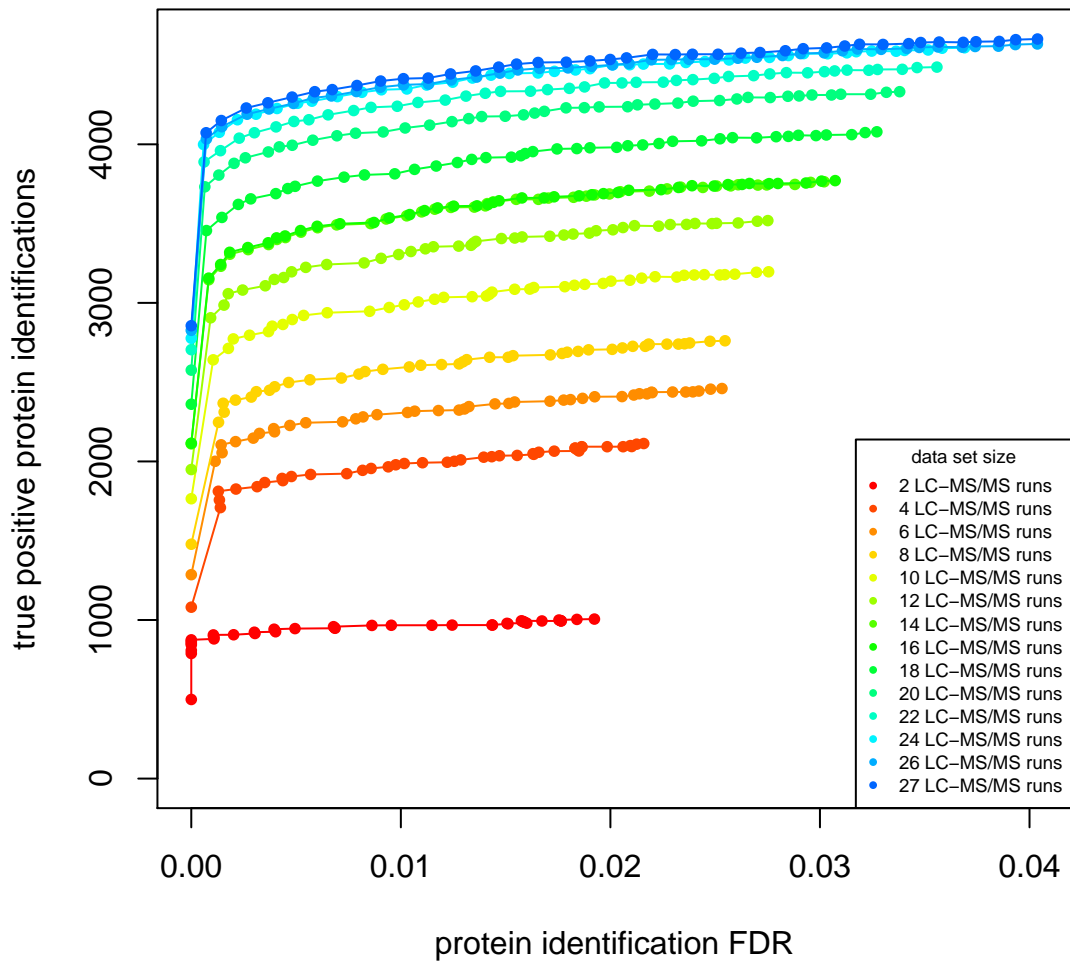
Proteins



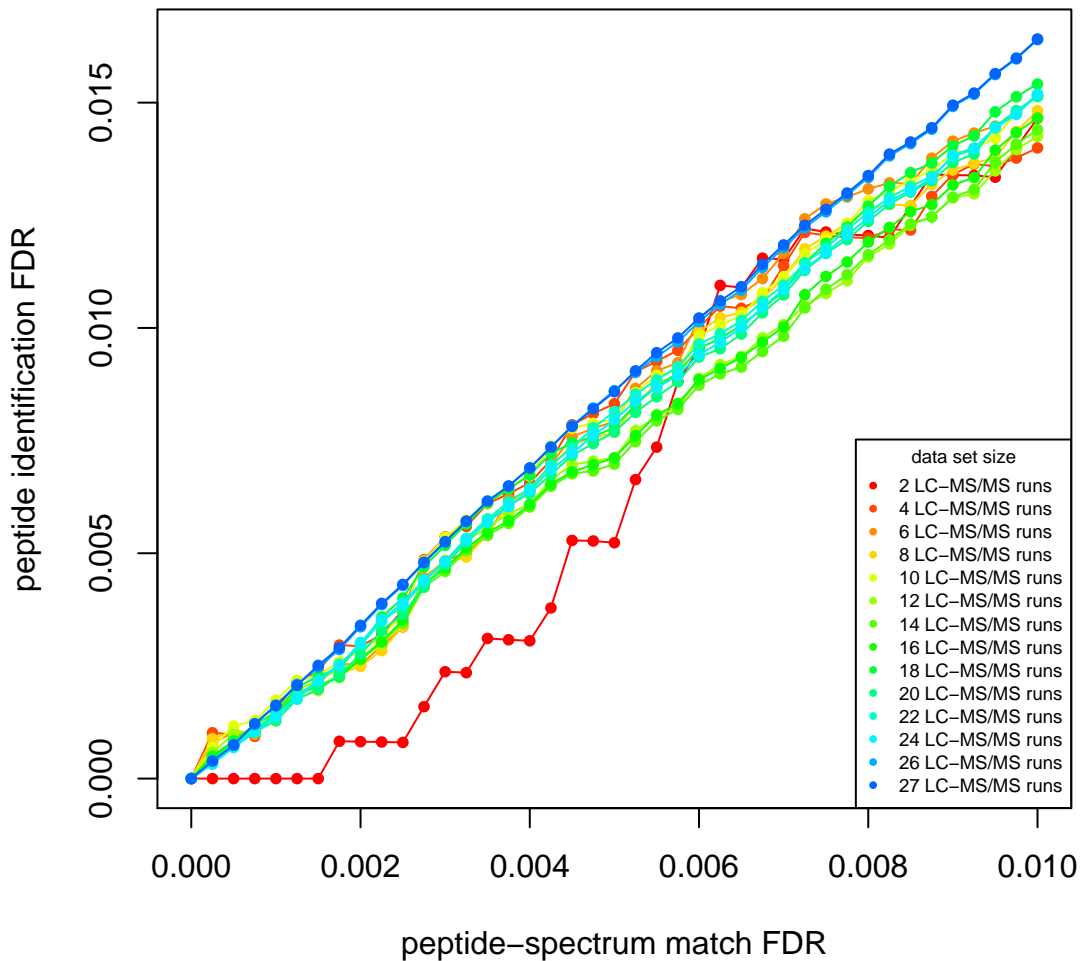
Proteins



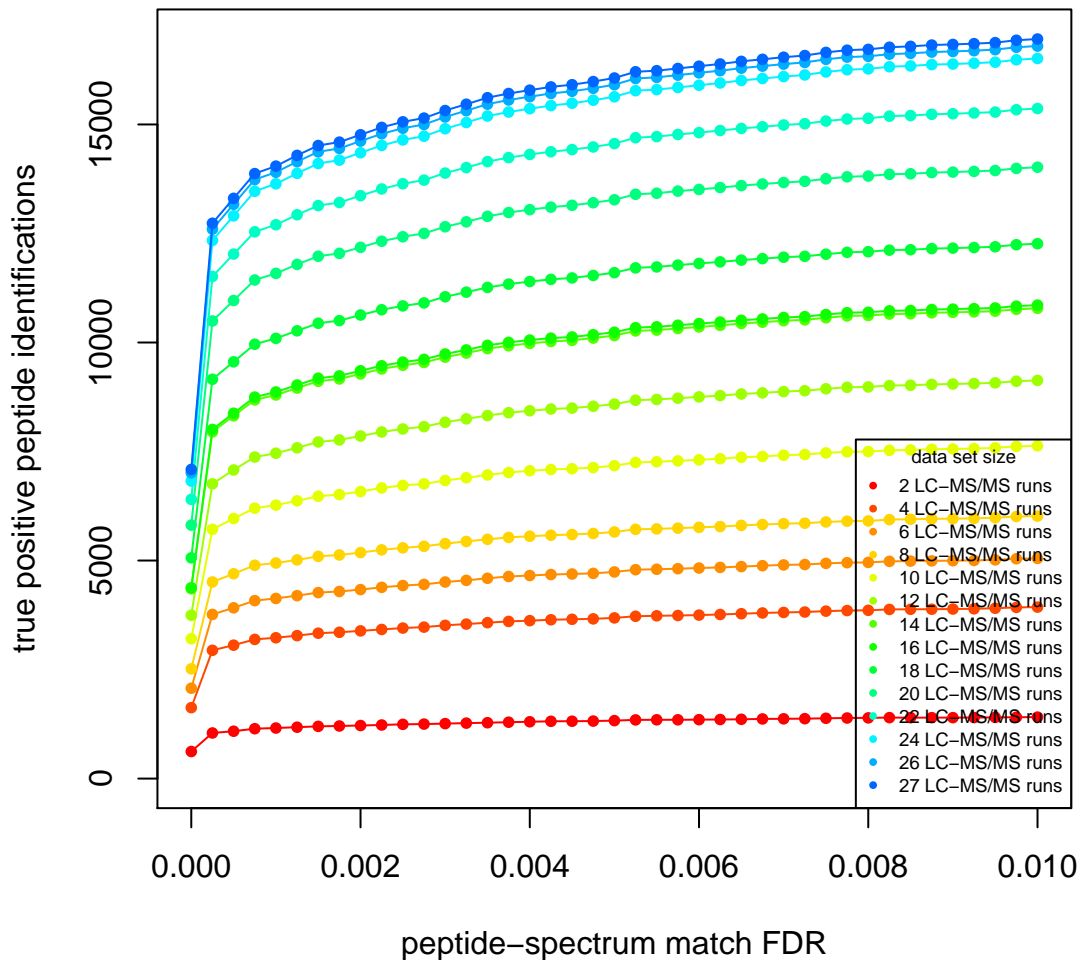
Proteins



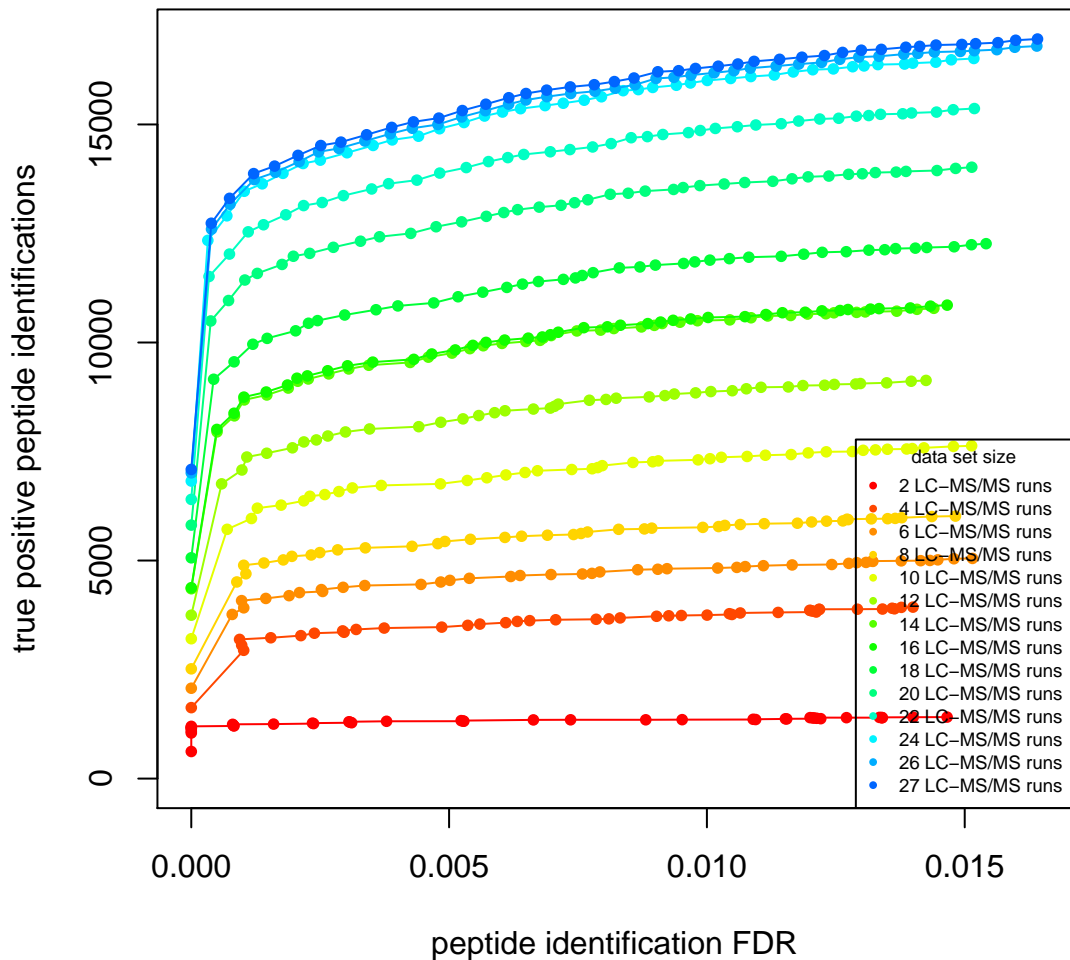
Peptides



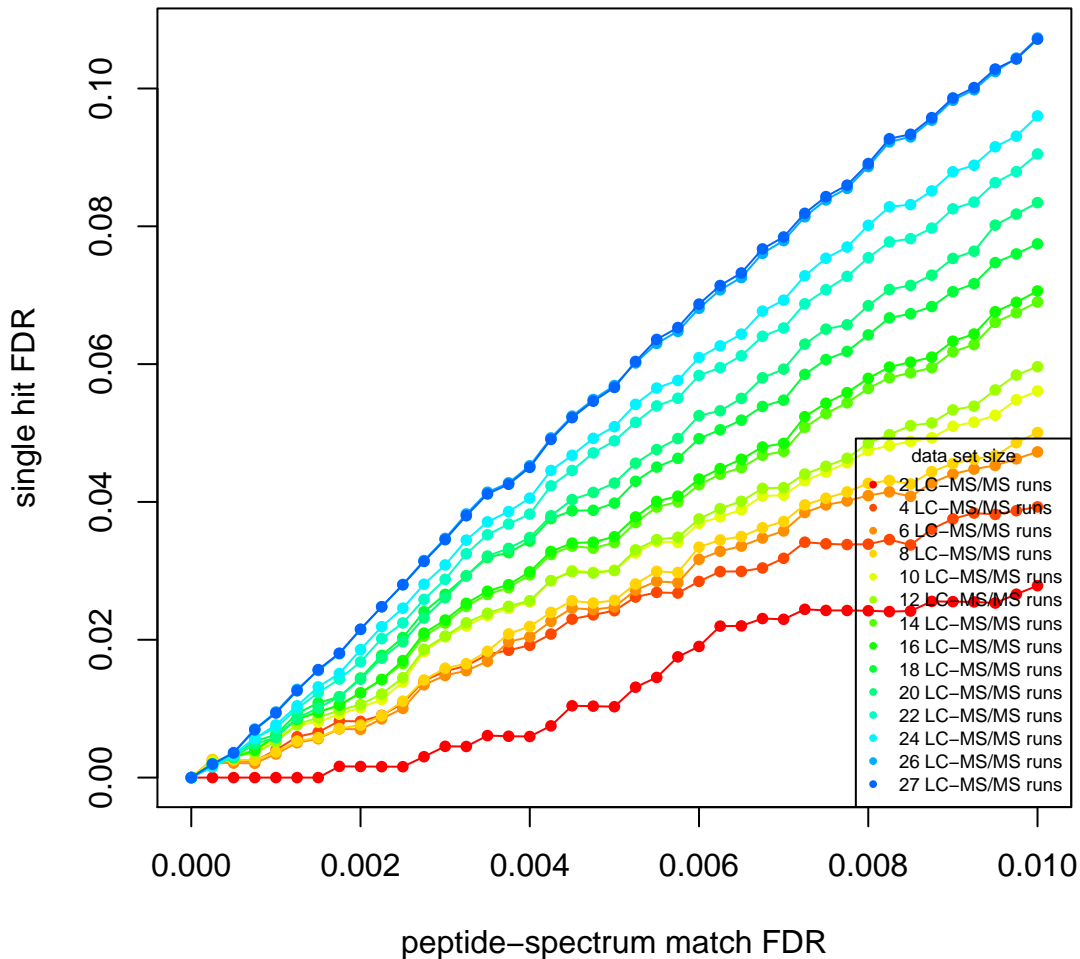
Peptides



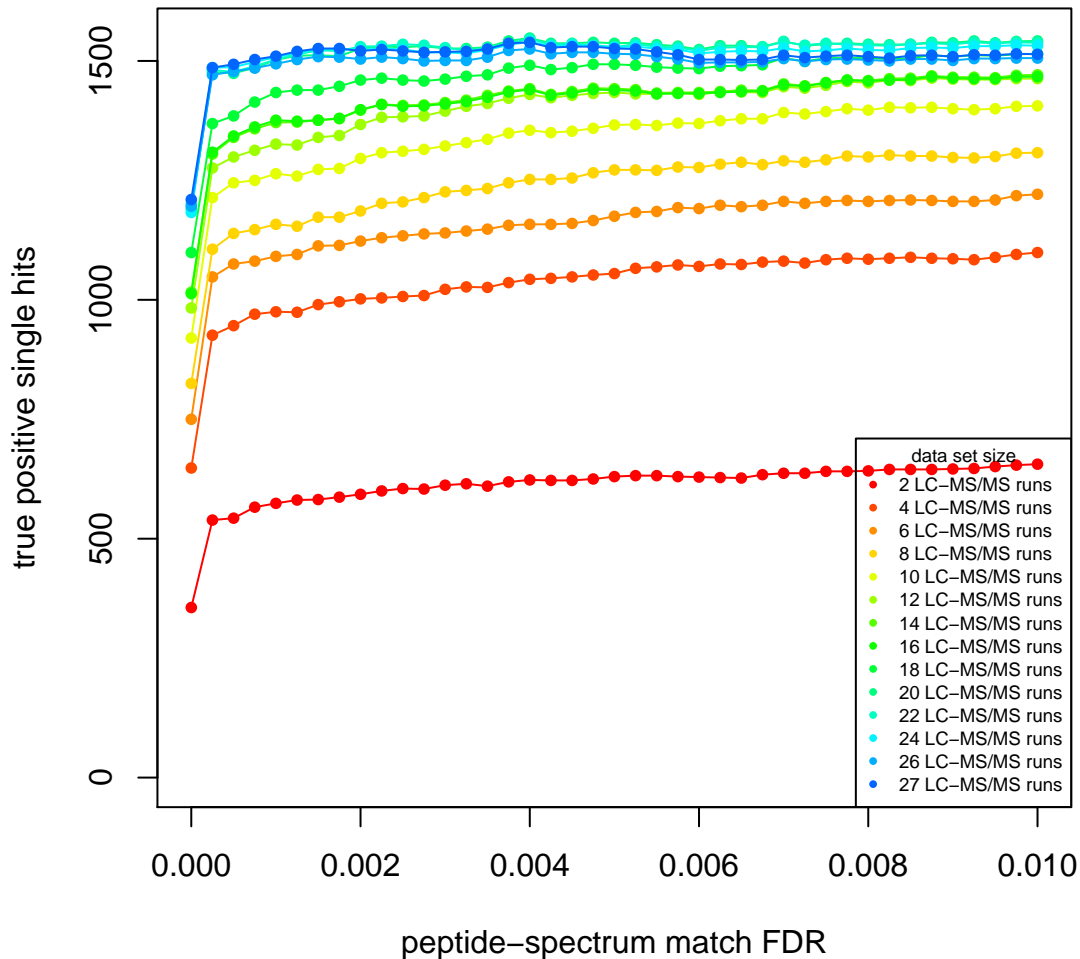
Peptides



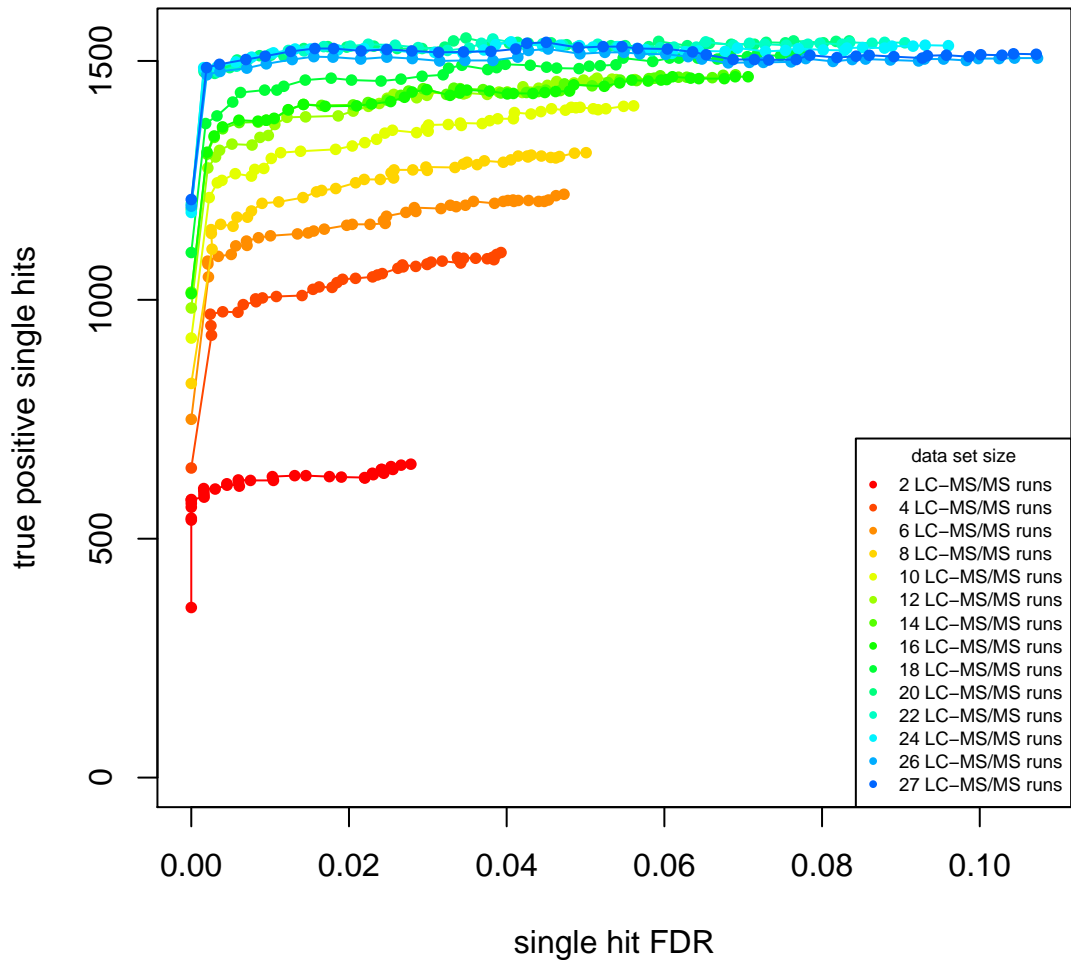
Single Hits (Single PSM Protein Identifications)



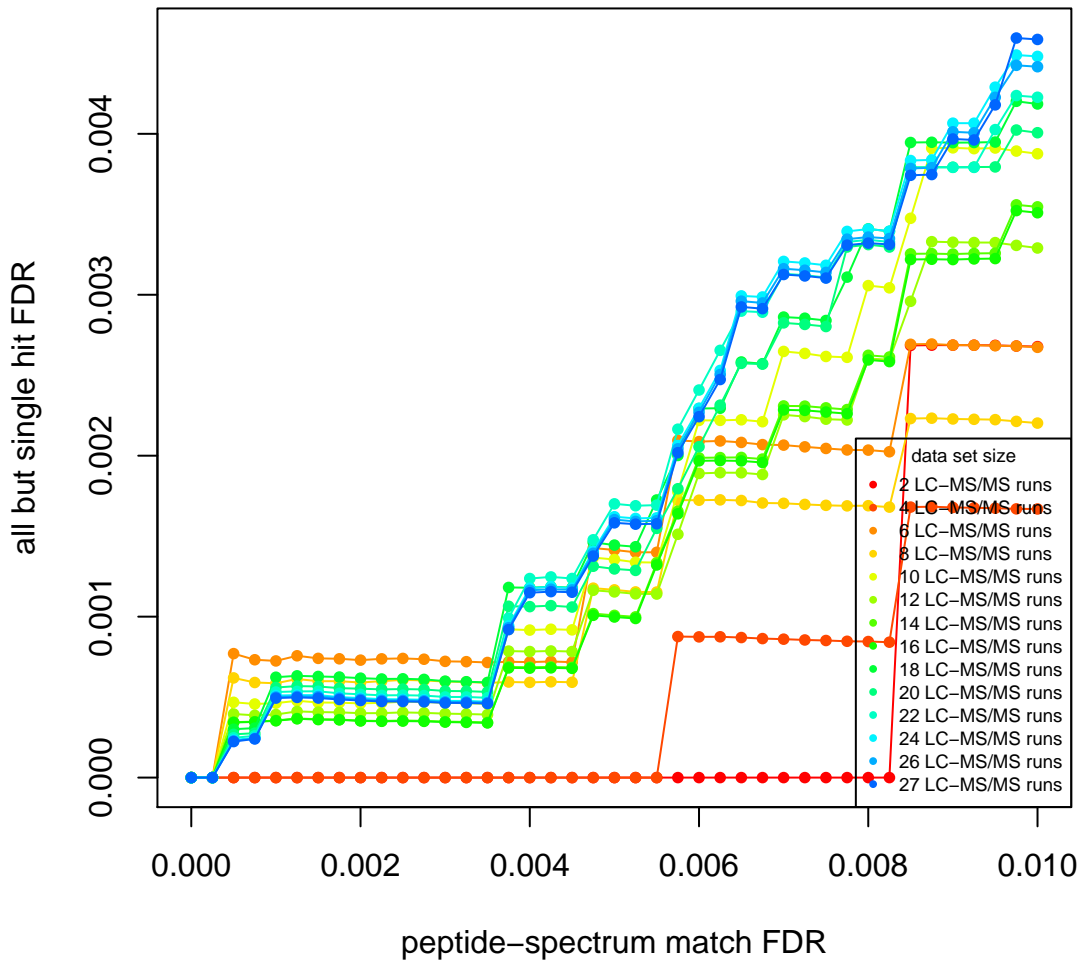
Single Hits (Single PSM Protein Identifications)



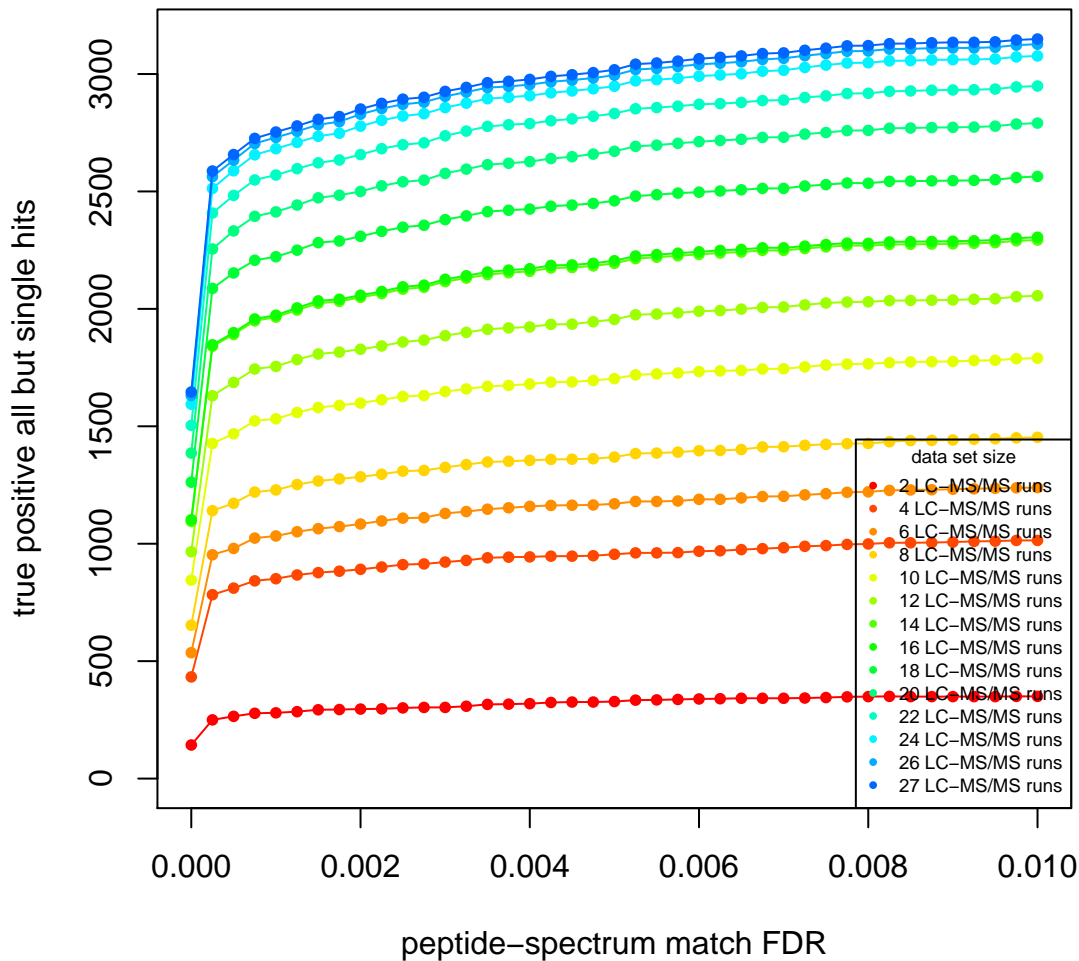
Single Hits (Single PSM Protein Identifications)



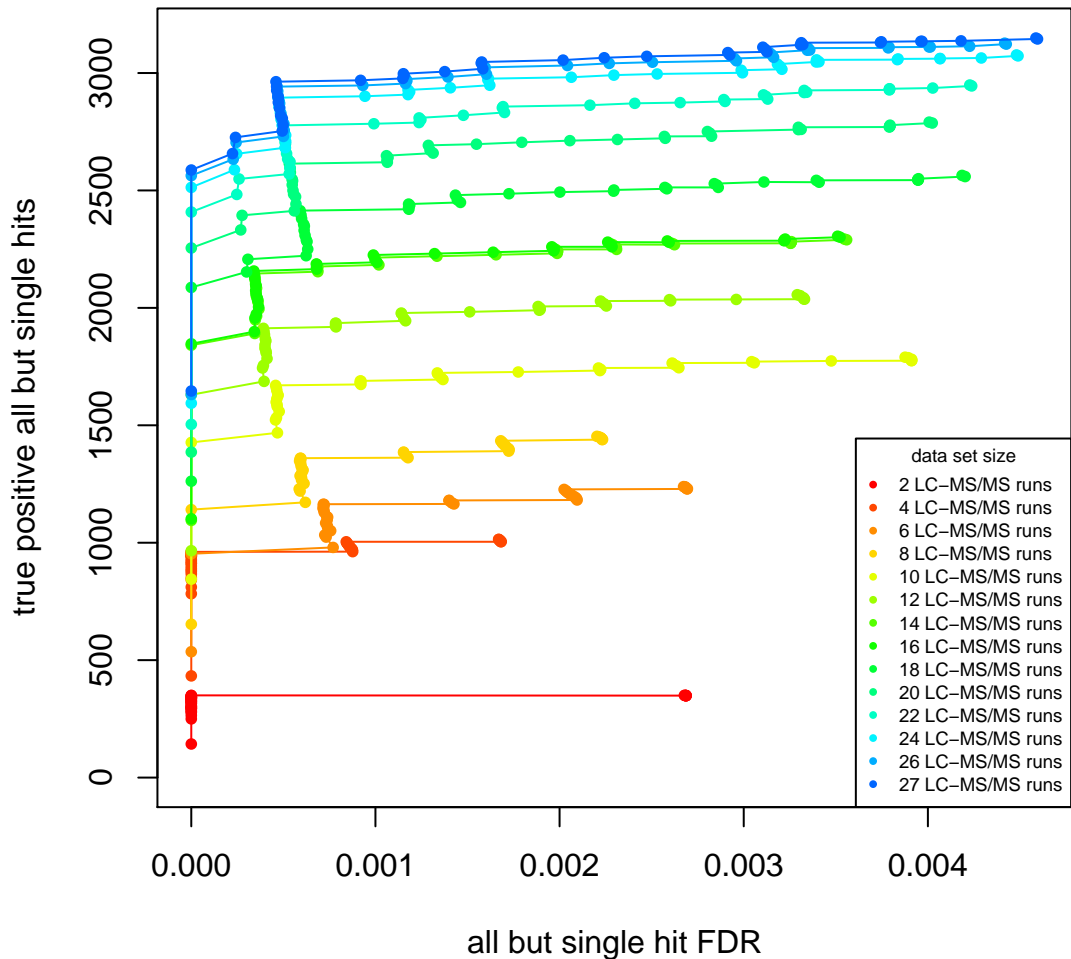
All But Single Hits (Without Single PSM Protein Identifications)



All But Single Hits (Without Single PSM Protein Identifications)



All But Single Hits (Without Single PSM Protein Identifications)



Effect of Removing Single Hits on Estimated True Positive Protein Identifications

